

**SPECIAL DISTRICT PUBLIC DISCLOSURE DOCUMENT**

**CHERRY CREEK CORPORATE CENTER METROPOLITAN DISTRICT**

As required pursuant to Section 32-1-104.8 of the Colorado Revised Statutes (“C.R.S.”), this Public Disclosure Document has been prepared by Cherry Creek Corporate Center Metropolitan District (the “**District**”) to provide information regarding the District.

**DISTRICT’S POWERS**

The powers of the District as authorized by Section 32-1-1004, C.R.S. and under its Amended and Restated Service Plan, as approved by the City Council of the City of Glendale (“**City**”) on December 4, 2012, are to provide a part or all of the improvements authorized to be planned, designed, acquired, constructed, installed, relocated, redeveloped and financed as generally described in the Special District Act (Section 32-1-101, et seq., of the Colorado Revised Statutes, as amended from time to time) except as specifically limited by the Service Plan. The District shall have the authority to plan, design, acquire, finance, construct, install, relocate and redevelop, operate and maintain parking structures, surface parking, plaza improvements, other public improvements, street and roadway improvements and identification signage as part of the Development Plan (as defined in the Service Plan) and to own, operate and maintain (or contract with an owners association to operate and maintain) such improvements.

**DISTRICT’S SERVICE PLAN**

The District’s Service Plan, which can be amended from time to time, includes a description of the District’s powers and authority. A copy of the District’s Service Plan is available from the Division of Local Government in the State Department of Local Affairs (“**Division**”).

The Cherry Creek Corporate Center Metropolitan District is authorized by Title 32 of the Colorado Revised Statutes to use a number of methods to raise revenues for capital needs and general operations costs. These methods, subject to the limitations imposed by Section 20 of Article X of the Colorado Constitution (“**TABOR**”), include issuing debt, levying taxes, and imposing fees and charges. Information concerning District directors, management, meetings, elections, and current taxes are provided annually in the Notice to Electors described in Section 32-1-809(1), C.R.S., which can be found at the District office, on file at the Division, or on file at the office of the Clerk and Recorder of Arapahoe County.

**DISTRICT MAP**

A map of the District’s boundaries is attached hereto as Exhibit A.

Dated this 22<sup>nd</sup> day of December, 2014.

**EXHIBIT A**

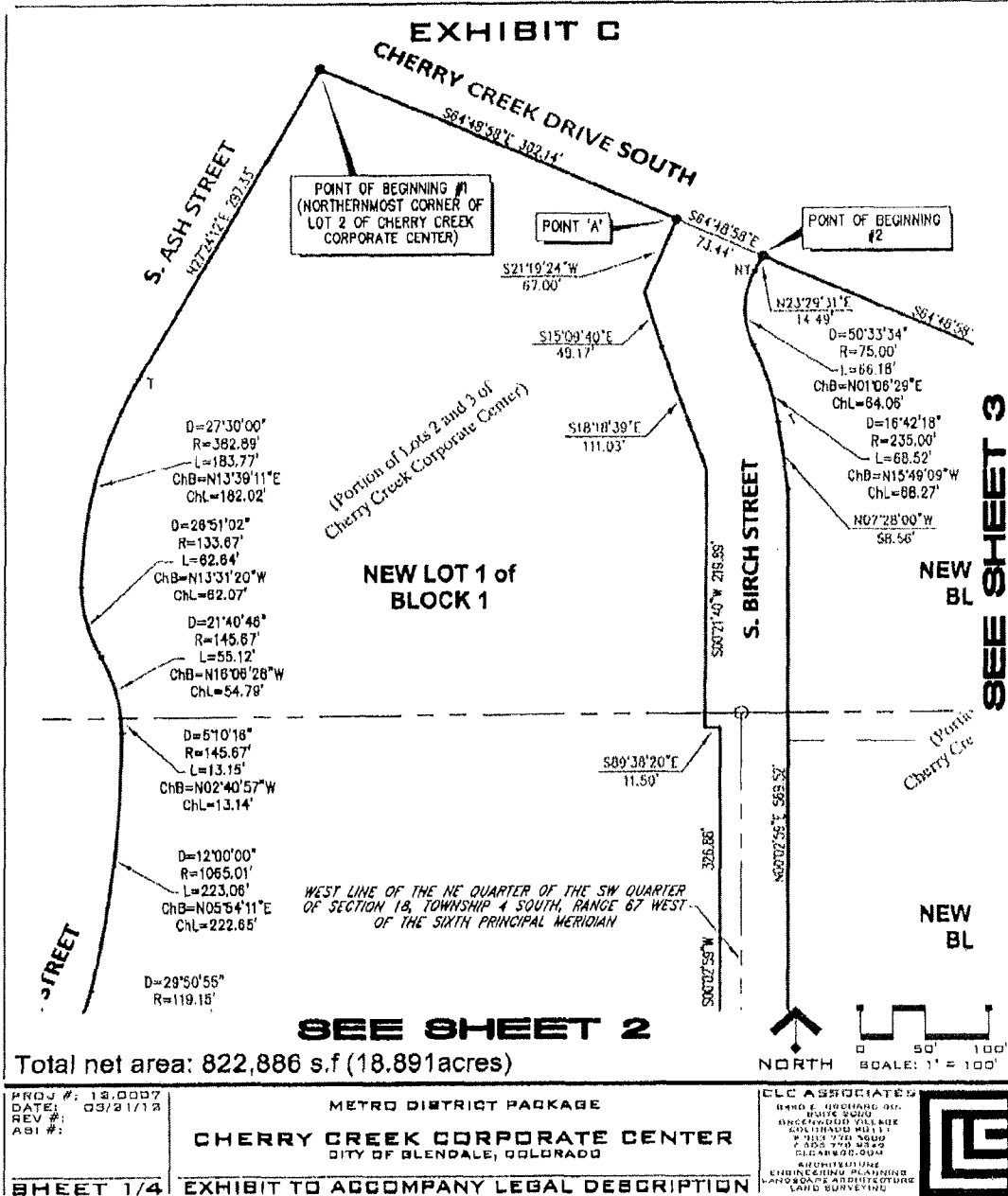
**District Map**

CHERRY CREEK CORPORATE CENTER  
METROPOLITAN DISTRICT

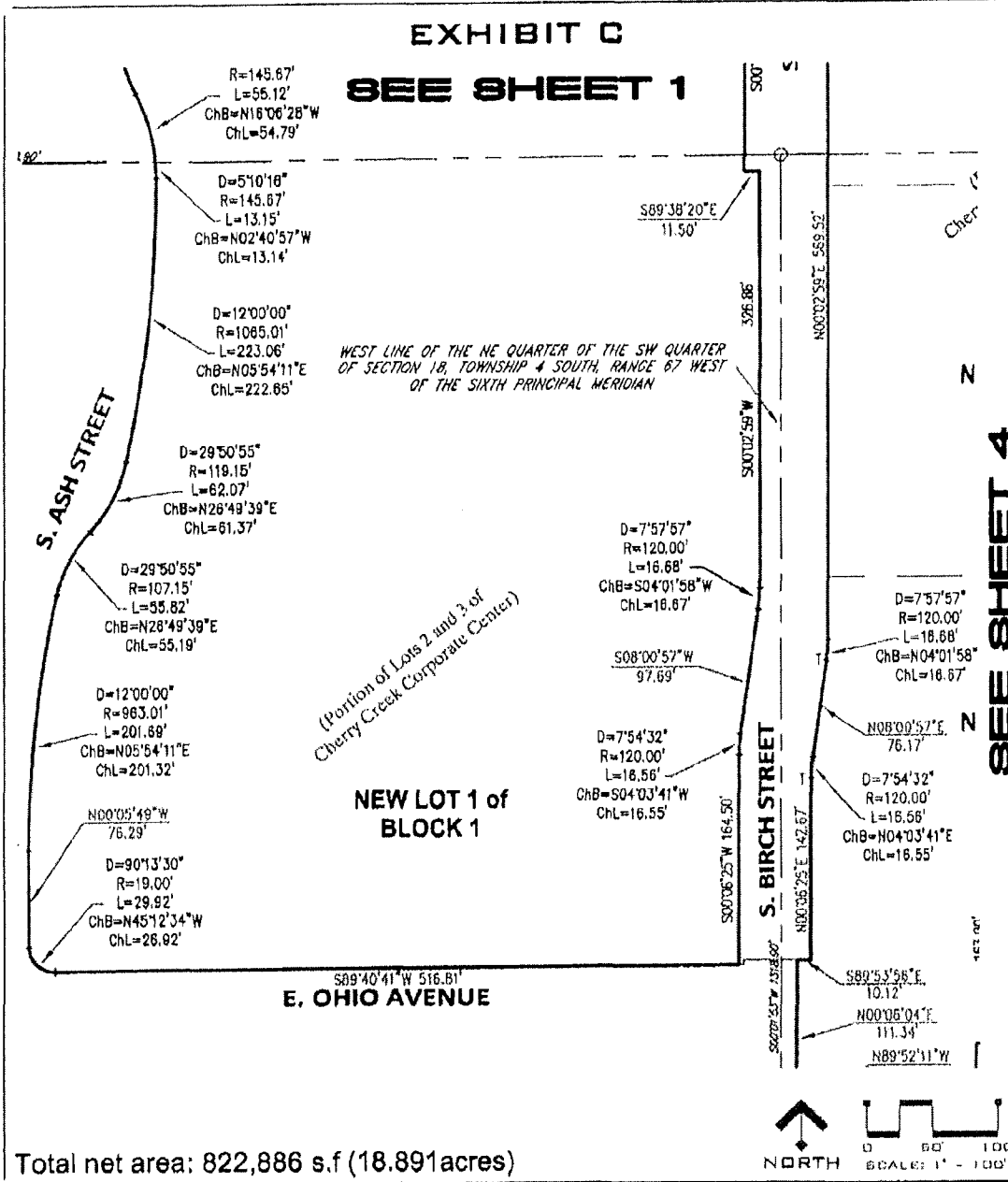
BOUNDARY MAP P. 1 OF 4

LGID 66376

District Boundary Map



CHERRY CREEK CORPORATE CENTER  
 METROPOLITAN DISTRICT *LA 10 66376* BOUNDARY MAP P. 2 OF 4



PROJ #: 12,0007  
 DATE: 09/21/12  
 REV #:  
 ASI #:

METRO DISTRICT PACKAGE

**CHERRY CREEK CORPORATE CENTER**  
 CITY OF GLENDALE, COLORADO

**EXHIBIT TO ACCOMPANY LEGAL DESCRIPTION**

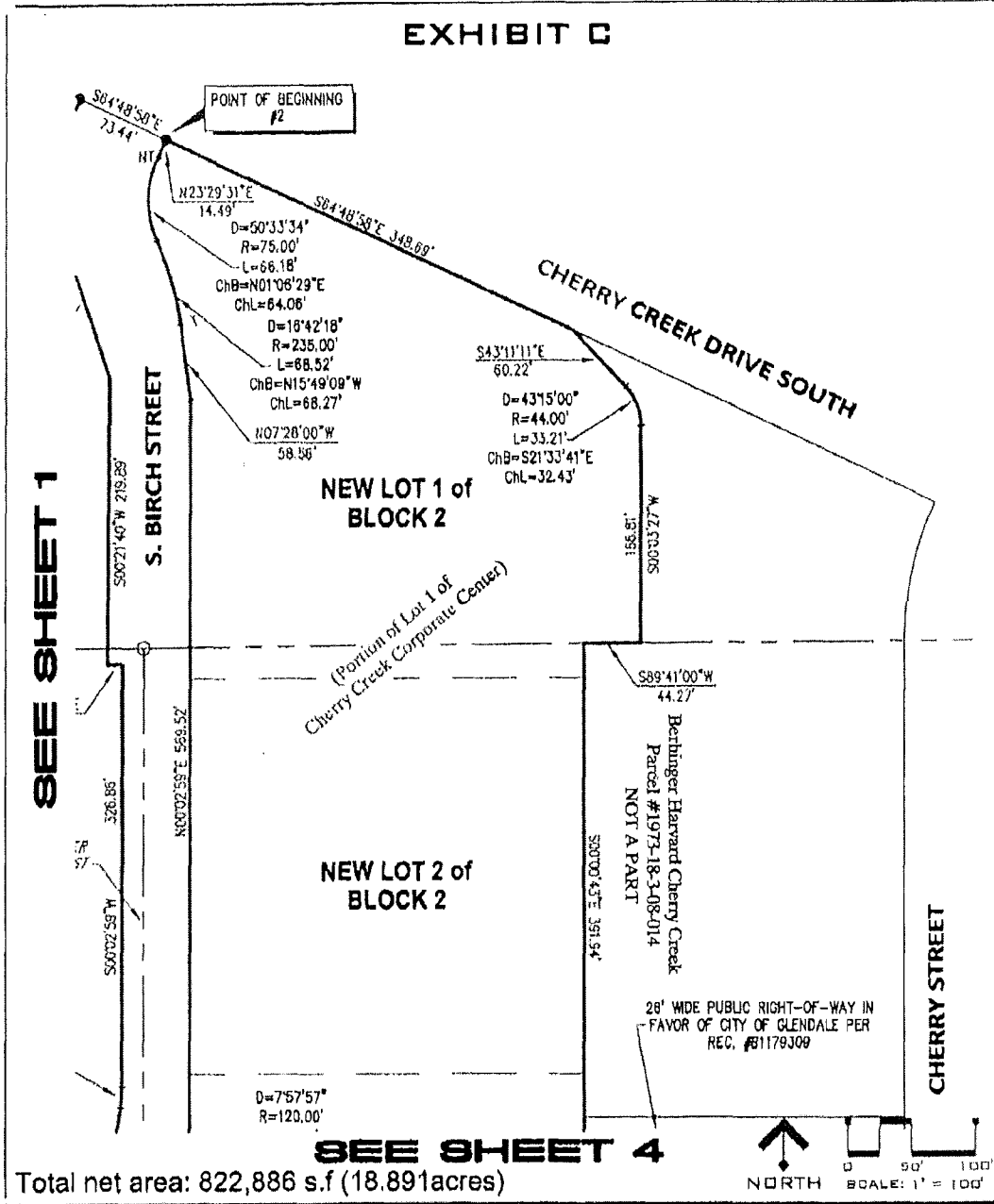
**CLC ASSOCIATES**  
 8480 E. GRIFFARD RD.  
 SUITE 2000  
 GREENWOOD VILLAGE  
 COLORADO 80111  
 P 303.773.3670  
 F 303.773.2824  
 CLARENCE CLC

ARCHITECTURE  
 ENGINEERING PLANNING  
 LANDSCAPE ARCHITECTURE  
 LAND SURVEYING

CHERRY CREEK CORPORATE CENTER  
METROPOLITAN DISTRICT

LG10 66376

BOUNDARY MAP P. 3 OF 4



PROJ #: 14,0007  
DATE: 03/21/12  
REV #:  
ABI #:

METRO DISTRICT PACKAGE  
**CHERRY CREEK CORPORATE CENTER**  
CITY OF GLENDALE, COLORADO

**SHEET 3/4** EXHIBIT TO ACCOMPANY LEGAL DESCRIPTION

**ELC ASSOCIATES**  
1490 C. UNIVERSITY RD.  
SUITE 2000  
DENVER, CO 80202  
TEL: 303.733.9400  
F: 303.733.3349  
COLORADO  
ARCHITECTS  
PLANNERS  
LANDSCAPE ARCHITECTS  
AND ENGINEERS

CHERRY CREEK CORPORATE CENTER  
 METROPOLITAN DISTRICT *LA10 66376*

BOUNDARY MAP P. 4 OF 4

